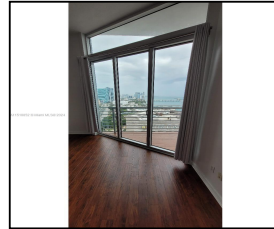
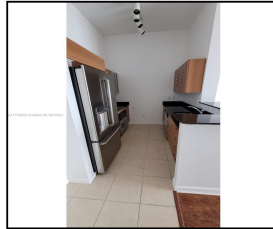
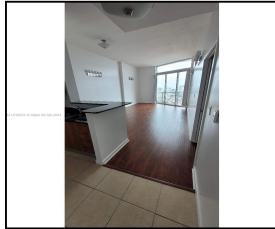
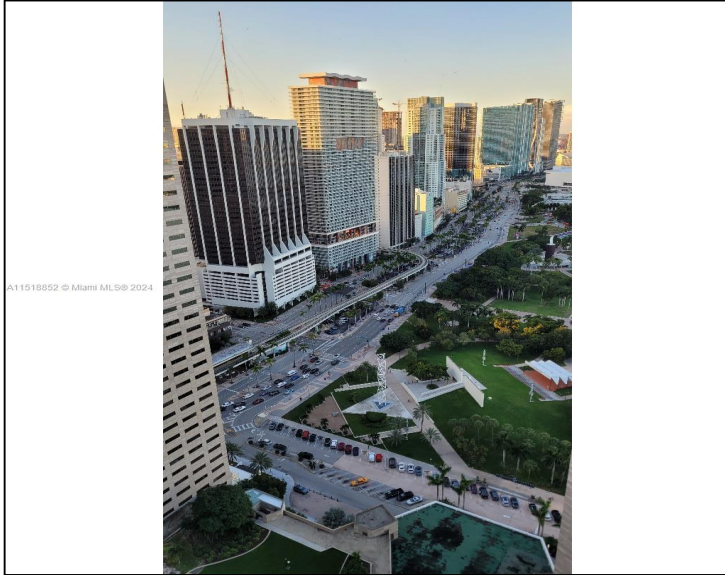


335 S Biscayne Blvd #UPH-02

\$550,000



## Remarks

Eagle's nest penthouse at the heart of Downtown, one of a kind escape away from the city high above the clouds! Built in 2006, consists of two buildings, east and west, and is located right on the waterfront in Downtown Miami, at the gateway of where Downtown meets the Miami River and Biscayne Bay. This landmark location commands panoramic views of Biscayne Bay, the Port of Miami, Brickell Avenue, Downtown Miami, Key Biscayne, and South Beach.

Amenities: 2 state-of-the-art fitness centers, 2 pools, jacuzzi, party room, 24hr valet, concierge, dry cleaning, convenient store, car wash & more. Minutes to Brickell. Bayside. arena & metro mover. Perfect for an investment.

## Features & Amenities

<b>County</b>		<b>Bedrooms</b>	1	<b>MLS#</b>	A11518852
<b>Address</b>	335 S Biscayne Blvd	<b>Bathrooms</b>	1	<b>Status</b>	A
	#UPH-02	<b>Half Bathrooms</b>	0	<b>Tax Amount</b>	\$7263
<b>City</b>	Miami FL	<b>Garage Spaces</b>	1	<b>Tax Year</b>	\$2,023
<b>Zip</b>	33131	<b>Water Front</b>	n/a	<b>Year Built</b>	2005
<b>Subdivision</b>	ONE MIAMI EAST	<b>Pool</b>	n/a		
	CONDO	<b>Pets Allowed</b>	n/a		
<b>Unit #</b>	UPH-02	<b>Total Area SqFt</b>			
<b>Complex</b>	ONE MIAMI EAST	<b>Maintenance Fee</b>	\$787		
	CONDO	<b>Lot Dimensions</b>	846		

Information has not been verified, is not guaranteed

