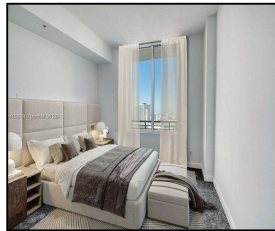
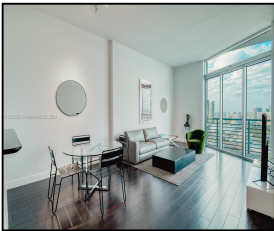


335 S Biscayne Blvd #UPH-10

\$675,000



Remarks

Live limitlessly in this sleek, stylish PENTHOUSE condo that offers 12'ft ceilings w/ endless views of Biscayne Bay, Port of Miami and Miami Beach. This highly sought after "10 line" offers an open concept that features 846SF of ample living, new lighting & tasteful renovations throughout. The kitchen has plenty of storage & breakfast-bar that continues into the main living space. A perfectly carved out dining area gives you space to entertain with wining & dining in mind. The North facing balcony gives you the best of both worlds: breathtaking sunsets to the West and the dazzling lights of Downtown Miami. Take advantage of one of Miami's most desired waterfront locations which is close to Bavfront Park.

Features & Amenities

County		Bedrooms	1	MLS#	A11536351
Address	335 S Biscayne Blvd	Bathrooms	1	Status	A
	#UPH-10	Haft Bathrooms	0	Tax Amount	\$8912
City	Miami FL	Garage Spaces	1	Tax Year	\$2,023
Zip	33131	Water Front	n/a	Year Built	2005
Subdivision	ONE MIAMI EAST	Pool	n/a		
	CONDO	Pets Allowed	n/a		
Unit #	UPH-10	Total Area SqFt			
Complex	ONE MIAMI EAST	Maintenance Fee	\$787		
	CONDO	Lot Dimensions	846		

Information has not been verified, is not guaranteed

