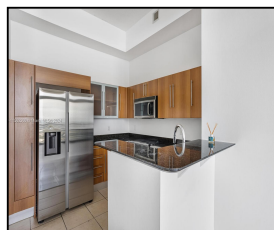
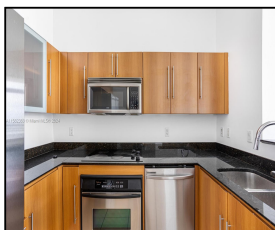
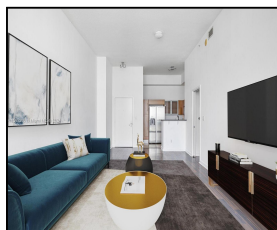
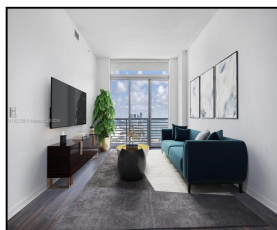


335 S Biscayne Blvd #LPH00

\$628,000



Remarks

Exclusive Lower Penthouse condo with 2 Bedrooms, 2 Baths & high ceilings. Soak in all of Miami with expansive view of the Skyline, Bayside & Arena, Port of Miami, Private Islands & Miami Beach right from your balcony! Unit features laminate wood floors throughout, marble bathroom counters, granite kitchen countertops and impact doors and windows to ensure a quiet retreat amidst bustling downtown. A waterfront stroll or jog along the river or a soothing ocean front yoga class are just an elevator ride down from the manned lobby. Situated at the edge of Biscayne Blvd & the Miami River. One Miami offers 2 pools. 2 avms. party room. conference room. sauna. iacuzzi. 24-hr security guard gate. valet.

Features & Amenities

County		Bedrooms	2	MLS#	A11562360
Address	335 S Biscayne Blvd #LPH00	Bathrooms	2	Status	A
City	Miami FL	Haft Bathrooms	0	Tax Amount	\$8823
Zip	33131	Garage Spaces	1	Tax Year	\$2,023
Subdivision	ONE MIAMI EAST CONDO,One Miami Downtown	Water Front	n/a	Year Built	2005
Unit #	LPH00	Pool	n/a		
Complex	One Miami Downtown	Pets Allowed	n/a		
		Total Area SqFt			
		Maintenance Fee	\$1,338		
		Lot Dimensions	1,105		

Information has not been verified, is not guaranteed

