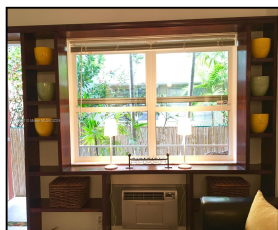


1228 Pennsylvania Ave #3

\$180,000



Remarks

Location Location Location. Charming Studio in the Middle of South Beach. walking distance to the Beach and Flamingo Park.

Features & Amenities

County		Bedrooms	0	MLS#	A11653567
Address	1228 Pennsylvania Ave #3	Bathrooms	1	Status	A
City	Miami Beach FL	Haft Bathrooms	0	Tax Amount	\$2559
Zip	33139	Garage Spaces	0	Tax Year	\$2,023
Subdivision	PENN CONDO	Water Front	n/a	Year Built	1961
Unit #	3	Pool	n/a		
Complex	PENN CONDO	Pets Allowed	n/a		
		Total Area SqFt			
		Maintenance Fee	\$320		
		Lot Dimensions	400		

Information has not been verified, is not guaranteed

