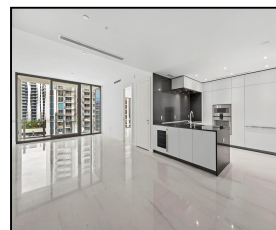
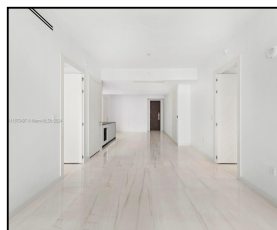
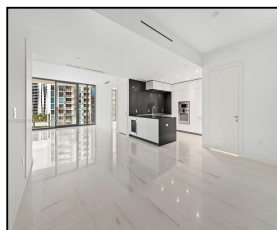
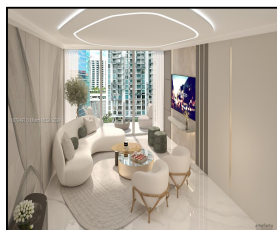
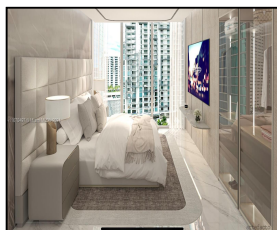
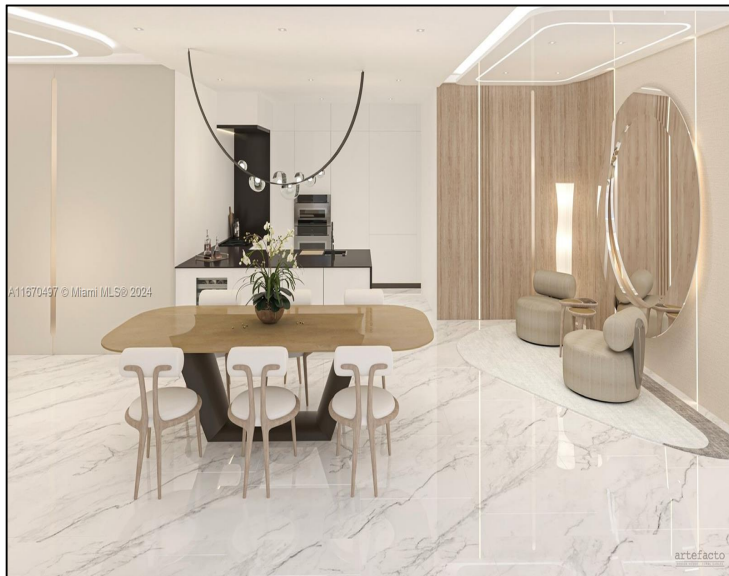


300 Biscayne Blvd Way #1809

\$1,990,000



## Remarks

Spacious 2 bedrooms + den in the newest and most luxurious tower in the city. North-facing terrace & gorgeous City Views. The first Aston Martin Residences building ever. World-class Sky amenities (located at floors 52,53,54,55) including; 2 floors gym, impressive spa & wellness center, virtual golf simulator with adaptive fields, movie theater, unique ballroom for events, chefs kitchen, private marina and more. Marble floors throughout, kitchens backsplash in black marble, floor to ceiling bathrooms in marble. Bertoloto italian doors, top quality european appliances. 2 delivery options: unfurnished (as delivered by developer) for listing price OR furnished as renderings by artefacto for \$150,000

## Features & Amenities

|                    |                                |                        |       |                   |           |
|--------------------|--------------------------------|------------------------|-------|-------------------|-----------|
| <b>County</b>      |                                | <b>Bedrooms</b>        | 2     | <b>MLS#</b>       | A11670497 |
| <b>Address</b>     | 300 Biscayne Blvd<br>Way #1809 | <b>Bathrooms</b>       | 2     | <b>Status</b>     | A         |
| <b>City</b>        | Miami FL                       | <b>Half Bathrooms</b>  | 1     | <b>Tax Amount</b> | \$        |
| <b>Zip</b>         | 33131                          | <b>Garage Spaces</b>   | 1     | <b>Tax Year</b>   | \$2,023   |
| <b>Subdivision</b> | Aston Martin<br>Residences     | <b>Water Front</b>     | n/a   | <b>Year Built</b> | 2024      |
| <b>Unit #</b>      | 1809                           | <b>Pool</b>            | n/a   |                   |           |
| <b>Complex</b>     | Aston Martin<br>Residences     | <b>Pets Allowed</b>    | n/a   |                   |           |
|                    |                                | <b>Total Area SqFt</b> |       |                   |           |
|                    |                                | <b>Maintenance Fee</b> | \$1   |                   |           |
|                    |                                | <b>Lot Dimensions</b>  | 1,578 |                   |           |

Information has not been verified, is not guaranteed

