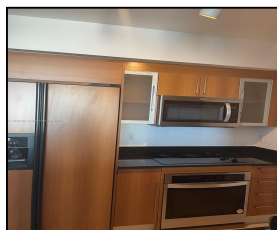
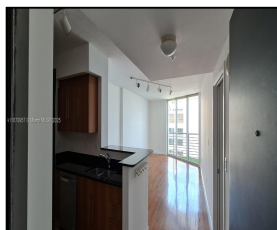


335 S Biscayne Blvd #3610

\$489,000



## Remarks

Beautiful Apartment at ONE MIAMI EAST CONDO with magnificent views over Miami Bay and Surrounding Skyline. One Bed, One Bath located on a 36th Floor, Living/dining area opens to a covered balcony. European-style kitchen cabinetry with granite countertops. Laminate floors and impact windows throughout excellent natural light, great condo amenities, and supreme location in Brickell. Direct access from the Miami Riverwalk Promenade to Bayside Marketplace. Building amenities are two pools, a jacuzzi, 2 gyms, 2 party rooms, a sauna, a kid's room, a business center. and EV charging. Assigned parking in the secured garage. 24 HR optional Valet Parking is right at your front

## Features & Amenities

<b>County</b>		<b>Bedrooms</b>	1	<b>MLS#</b>	A11670957
<b>Address</b>	335 S Biscayne Blvd #3610	<b>Bathrooms</b>	1	<b>Status</b>	A
<b>City</b>	Miami FL	<b>Half Bathrooms</b>	0	<b>Tax Amount</b>	\$6930
<b>Zip</b>	33131	<b>Garage Spaces</b>	0	<b>Tax Year</b>	\$2,023
<b>Subdivision</b>	ONE MIAMI EAST CONDO	<b>Water Front</b>	n/a	<b>Year Built</b>	2005
<b>Unit #</b>	3610	<b>Pool</b>	n/a		
<b>Complex</b>	ONE MIAMI EAST	<b>Pets Allowed</b>	n/a		
		<b>Total Area SqFt</b>			
		<b>Maintenance Fee</b>	\$986		
		<b>Lot Dimensions</b>	846		

Information has not been verified, is not guaranteed

