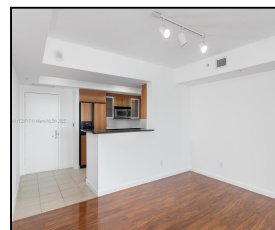
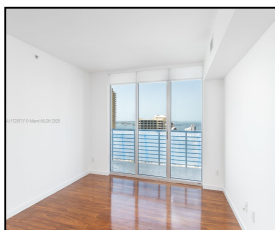
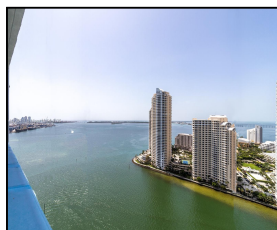
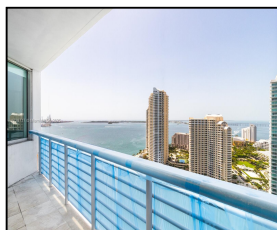


335 S Biscayne Blvd #3207

\$770,000



## Remarks

Luxurious Living at ONE MIAMI East Tower | Unit 3207 Experience stunning urban living in this 2-bedroom, 2-bath condo at ONE MIAMI East Tower. Perched at the NE corner of the Miami River and Biscayne Bay, this 1,178 SF unit boasts breathtaking bay, city, and river views from a spacious south-facing balcony. Located in the heart of Downtown Miami, you're steps from Whole Foods, Brickell City Centre, cinemas, and world-class dining. Amenities include 24-hour security, concierge, valet parking, resort-style pools, fitness center, business facilities, and tropical landscaping. The unit features European kitchen cabinetry, stainless steel appliances, floor-to-ceiling windows, an in-unit washer/dryer, and a

## Features & Amenities

<b>County</b>		<b>Bedrooms</b>	2	<b>MLS#</b>	A11728717
<b>Address</b>	335 S Biscayne Blvd #3207	<b>Bathrooms</b>	2	<b>Status</b>	A
<b>City</b>	Miami FL	<b>Half Bathrooms</b>	0	<b>Tax Amount</b>	\$9929
<b>Zip</b>	33131	<b>Garage Spaces</b>	1	<b>Tax Year</b>	\$2,023
<b>Subdivision</b>	ONE MIAMI EAST CONDO	<b>Water Front</b>	n/a	<b>Year Built</b>	2005
<b>Unit #</b>	3207	<b>Pool</b>	n/a		
<b>Complex</b>	ONE MIAMI EAST	<b>Pets Allowed</b>	n/a		
		<b>Total Area SqFt</b>			
		<b>Maintenance Fee</b>	\$1,328		
		<b>Lot Dimensions</b>	1,178		

Information has not been verified, is not guaranteed

