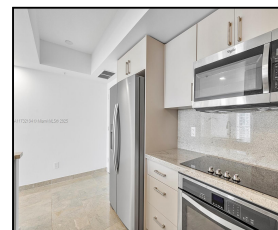
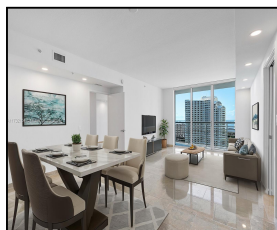


335 S Biscayne Blvd #2207

\$727,000



Remarks

Spacious 2/2 with split floor plan and fabulous direct views of Miami River, Biscayne Bay, Port of Miami and Brickell Key. Unit features marble floor, new and completely remodeled open kitchen, stainless-steel appliances, granite countertops and backsplash. One assigned covered parking. Full amenities including 2 swimming pools, 2 gyms with premium equipment, jacuzzi, sauna, party room, conference room, business center, convenience store, 24/7 security and valet parking. Two restaurants downstairs. Walking distance to Arena, Performance Center, Museums, Brickell City Centre, Marv Brickell Village. Whole Foods and more. Minutes away from South Beach. Coral Gables. Kev Biscayne. Coconut

Features & Amenities

County		Bedrooms	2	MLS#	A11732104
Address	335 S Biscayne Blvd #2207	Bathrooms	2	Status	PS
City	Miami FL	Haft Bathrooms	0	Tax Amount	\$10300
Zip	33131	Garage Spaces	1	Tax Year	\$2,024
Subdivision	ONE MIAMI EAST CONDO	Water Front	n/a	Year Built	2005
Unit #	2207	Pool	n/a		
Complex	ONE MIAMI EAST CONDO	Pets Allowed	n/a		
		Total Area SqFt			
		Maintenance Fee	\$1,327		
		Lot Dimensions	1,178		

Information has not been verified, is not guaranteed

