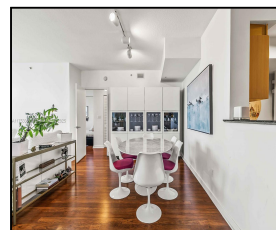
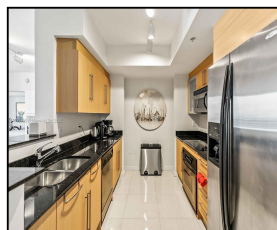
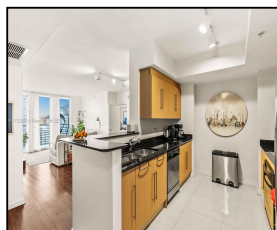
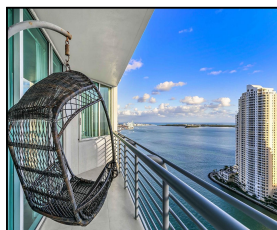
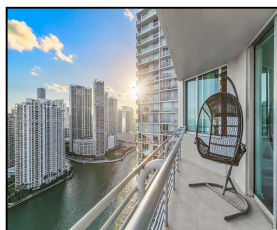


335 S Biscayne Blvd #3505

\$4,000



## Remarks

Beautiful 2bedrms 2bths split plan condo with direct views of Biscayne Bay, River, and Miami Skyline. Condo has wood and tile floors; Italian kitchen cabinets and granite countertops, marble finished bath counters. Bldg amenities incl: 2 swimming pools, jacuzzi, 2 Fitness Centers, Sauna, 2 Party Rooms, Conference Rm, and 24 hrs security valet and concierge. Centrally located within walking distance to Brickell City Center, Whole Foods, Bayside, Arena, and Museum, and a short drive to SoBe, Gables, Key Biscayne, Design District and Airport.

## Features & Amenities

<b>County</b>		<b>Bedrooms</b>	2	<b>MLS#</b>	A11753305
<b>Address</b>	335 S Biscayne Blvd #3505	<b>Bathrooms</b>	2	<b>Status</b>	A
<b>City</b>	Miami FL	<b>Haft Bathrooms</b>	0	<b>Tax Amount</b>	\$
<b>Zip</b>	33131	<b>Garage Spaces</b>	1	<b>Tax Year</b>	\$0
<b>Subdivision</b>	ONE MIAMI EAST CONDO,ONE MIAMI CONDO	<b>Water Front</b>	n/a	<b>Year Built</b>	2005
<b>Unit #</b>	3505	<b>Pool</b>	n/a		
<b>Complex</b>	ONE MIAMI EAST CONDO	<b>Pets Allowed</b>	n/a		
		<b>Total Area SqFt</b>			
		<b>Maintenance Fee</b>	\$0		
		<b>Lot Dimensions</b>	1,227		

Information has not been verified, is not guaranteed

