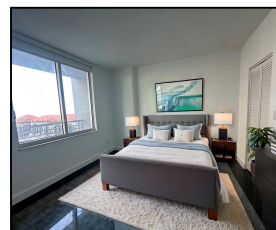
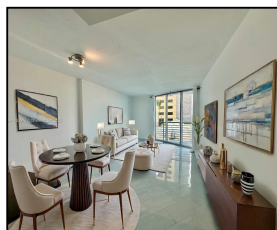
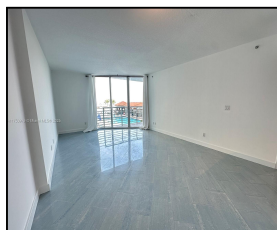
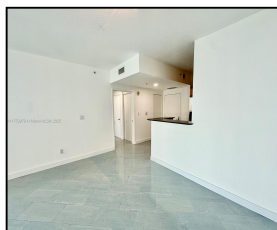


335 S Biscayne Blvd #810

\$2,900



## Remarks

Bright and spacious 846 sf 1 bed/1 bath apartment in the heart of the Downtown/Brickell Miami area. Incredible views of the bay and the city! One Miami Condominium has amazing amenities including a pool, fitness center, and large deck overlooking Biscayne Bay. valet service, two party rooms, 1 assigned parking on the same floor as the unit, business center. Internet included in rent. Walking distance to Brickell City Center, Bayfront Park, Wholefoods, and other attractions.

## Features & Amenities

<b>County</b>		<b>Bedrooms</b>	1	<b>MLS#</b>	A11753979
<b>Address</b>	335 S Biscayne Blvd #810	<b>Bathrooms</b>	1	<b>Status</b>	A
<b>City</b>	Miami FL	<b>Haft Bathrooms</b>	0	<b>Tax Amount</b>	\$
<b>Zip</b>	33131	<b>Garage Spaces</b>	1	<b>Tax Year</b>	\$0
<b>Subdivision</b>	ONE MIAMI EAST CONDO	<b>Water Front</b>	n/a	<b>Year Built</b>	2005
<b>Unit #</b>	810	<b>Pool</b>	n/a		
<b>Complex</b>	ONE MIAMI EAST CONDO	<b>Pets Allowed</b>	n/a		
		<b>Total Area SqFt</b>			
		<b>Maintenance Fee</b>	\$0		
		<b>Lot Dimensions</b>	846		

Information has not been verified, is not guaranteed

