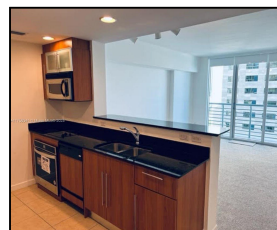
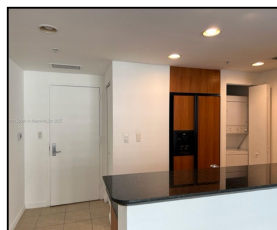
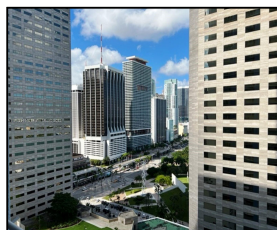


335 S Biscayne Blvd #2406

\$2,350



Remarks

Spacious studio at One Miami East Tower with beautiful views of the Bay, Port of Miami and Downtown. Featuring kitchen with granite countertops, walk in closet, blackouts and carpet. Rent includes water, basic cable and 1 assigned covered parking space. Amenities include: gym with cardio and strength training rooms, sauna, party room, attended lobby, secured gate entry, on site waterfront Italian restaurant, and more. Great location: walking distance to Brickell, Brickell City Centre, Whole Foods Market, Perez Art Museum, Frost Science Museum, Bayfront Park, Bayside Marketplace. Miami World Center shopping. and restaurants. Easy access to Metro Mover and Highways. AVAILABLE

Features & Amenities

County		Bedrooms	0	MLS#	A11758341
Address	335 S Biscayne Blvd #2406	Bathrooms	1	Status	A
City	Miami FL	Half Bathrooms	0	Tax Amount	\$
Zip	33131	Garage Spaces	1	Tax Year	\$0
Subdivision	ONE MIAMI EAST CONDO	Water Front	n/a	Year Built	2005
Unit #	2406	Pool	n/a		
Complex	ONE MIAMI EAST CONDO	Pets Allowed	n/a		
		Total Area SqFt			
		Maintenance Fee	\$0		
		Lot Dimensions	507		

Information has not been verified, is not guaranteed

