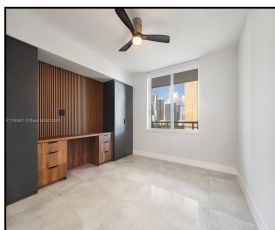
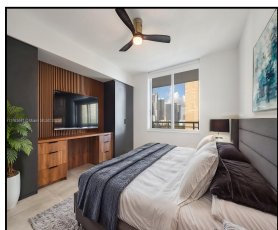


335 S Biscayne Blvd #1502

\$3,100



## Remarks

Exquisite renovation in 2024! Experience modern luxury in this 1-bed, 1-bath condo at One Miami East. Unit 1502 features custom-built cabinetry with LED lighting and a work-from-home setup by Amavel Design. The kitchen features black SS appliances and a quartzite waterfall island. Enjoy a spa-like bathroom with a slate accent wall, glass shower, and smart toilet. Steps away, enjoy world-class entertainment and dining. With captivating city skyline and water views, this condo places you at the vibrant crossroads of Downtown Miami, the Miami River, and Biscayne Bay, with Brickell just over the bridge. This is urban living at its finest.

## Features & Amenities

<b>County</b>		<b>Bedrooms</b>	1	<b>MLS#</b>	A11763641
<b>Address</b>	335 S Biscayne Blvd #1502	<b>Bathrooms</b>	1	<b>Status</b>	PS
<b>City</b>	Miami FL	<b>Half Bathrooms</b>	0	<b>Tax Amount</b>	\$
<b>Zip</b>	33131	<b>Garage Spaces</b>	1	<b>Tax Year</b>	\$0
<b>Subdivision</b>	ONE MIAMI EAST CONDO	<b>Water Front</b>	n/a	<b>Year Built</b>	2005
<b>Unit #</b>	1502	<b>Pool</b>	n/a		
<b>Complex</b>	ONE MIAMI EAST CONDO	<b>Pets Allowed</b>	n/a		
		<b>Total Area SqFt</b>			
		<b>Maintenance Fee</b>	\$0		
		<b>Lot Dimensions</b>	846		

Information has not been verified, is not guaranteed

