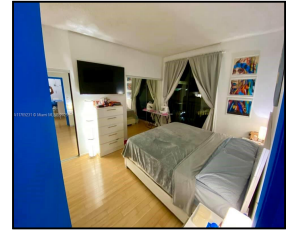
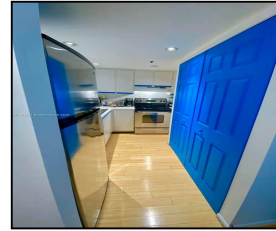
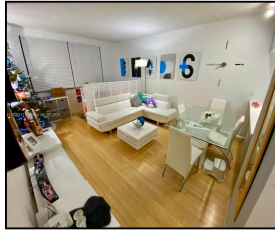


540 Brickell Key Dr #310

\$290,000



Remarks

Seller Motivated – Priced to Sell! Most affordable 1BD/1.5BA on exclusive Brickell Key. Unit faces the parking lot, offering a budget-friendly entry into one of Miami's most desirable communities. Enjoy bay breezes, direct promenade access, assigned parking, and private storage. Just steps to dining, gyms, shops & more. Amenities: renovated gym, saltwater pool, BBQ area, sauna, jacuzzi, racquetball, tennis, 24/7 concierge, valet & convenience store. Current assessment of approx. \$50K in place. Condo approved with as little as 5% down. Seller open to financing options.

Features & Amenities

County		Bedrooms	1	MLS#	A11765231
Address	540 Brickell Key Dr #310	Bathrooms	1	Status	A
City	Miami FL	Haft Bathrooms	1	Tax Amount	\$2408
Zip	33131	Garage Spaces	1	Tax Year	\$2,024
Subdivision	BRICKELL KEY II CONDO,Brickell Key II	Water Front	n/a	Year Built	1991
Unit #	310	Pool	n/a		
Complex	Brickell Key II	Pets Allowed	n/a		
		Total Area SqFt			
		Maintenance Fee	\$1,031		
		Lot Dimensions	700		

Information has not been verified, is not guaranteed

