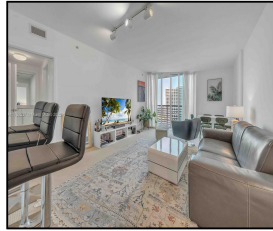


335 S Biscayne Blvd #2003

\$459,000



Remarks

Absolutely breath-taking expansive water views of the bay and ocean from this huge 1-bedroom condo unit. Watch the yachts passing in and out of the mouth of the Miami River. Oversized 868 square-foot unit with an extra-large walk-in closet, long and wide living room space all in one of the best locations in One Miami East tower right on the corner of Downtown Miami, directly on the bay with unobstructed views that will never change. Only 1 block away from Whole Foods and right next to the stunning, hottest new development in Downtown Miami, Aston Martin Residences. Building features amazing comprehensive amenities including 2 resort-style pools, 2 Fitness Centers and 1 assigned parking

Features & Amenities

County		Bedrooms	1	MLS#	A11782537
Address	335 S Biscayne Blvd	Bathrooms	1	Status	A
	#2003	Half Bathrooms	0	Tax Amount	\$7296
City	Miami FL	Garage Spaces	1	Tax Year	\$2,024
Zip	33131	Water Front	n/a	Year Built	2005
Subdivision	ONE MIAMI EAST	Pool	n/a		
	CONDO	Pets Allowed	n/a		
Unit #	2003	Total Area SqFt			
Complex	One Miami	Maintenance Fee	\$957		
	Condominium	Lot Dimensions	868		

Information has not been verified, is not guaranteed

