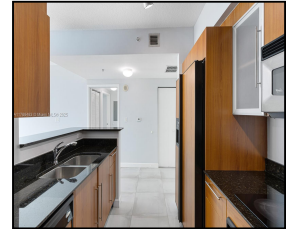


335 S Biscayne Blvd #1110

\$3,000



Remarks

Beautiful 1bdrm 1bth with direct views of Biscayne Bay. Condo has tiles throughout, Italian kitchen cabinets, w/ granite countertops and marble countertop baths. Bldg amenities incl: 2 swimming pools, Jacuzzi, Sauna, 2 Fitness Ctrs., Convenience Store, Conf. Rm., 24 hrs. Security, Valet, and Concierge. Centrally located within minutes to Brickell, KB, SoBe, Grove, Design District and Airport.

Features & Amenities

County		Bedrooms	1	MLS#	A11788483
Address	335 S Biscayne Blvd	Bathrooms	1	Status	PS
	#1110	Haft Bathrooms	0	Tax Amount	\$
City	Miami FL	Garage Spaces	1	Tax Year	\$0
Zip	33131	Water Front	n/a	Year Built	2005
Subdivision	One Miami East	Pool	n/a		
	Condo	Pets Allowed	n/a		
Unit #	1110	Total Area SqFt			
Complex	One Miami East	Maintenance Fee	\$0		
	Condo	Lot Dimensions	846		

Information has not been verified, is not guaranteed

