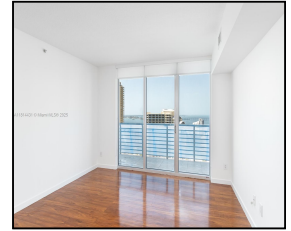


335 S Biscayne Blvd #3207

\$4,000



Remarks

For Rent | ONE MIAMI East Tower – Unit 3207 Live in the heart of Downtown Miami in this 2BR/2BA condo with 1,178 SF of modern comfort and stunning bay, city, and river views. Located at the NE corner of the Miami River and Biscayne Bay, this south-facing unit features a private balcony, floor-to-ceiling windows, European kitchen cabinetry, stainless steel appliances, in-unit washer/dryer, and a walk-in closet. Enjoy resort-style amenities including 24-hour security, concierge, valet, pools, fitness center, business lounge, and more. Steps from Whole Foods, Brickell City Centre, and top dining like Il Gabbiano.

Features & Amenities

County		Bedrooms	2	MLS#	A11814431
Address	335 S Biscayne Blvd	Bathrooms	2	Status	AC
	#3207	Haft Bathrooms	0	Tax Amount	\$
City	Miami FL	Garage Spaces	1	Tax Year	\$0
Zip	33131	Water Front	n/a	Year Built	2005
Subdivision	ONE MIAMI EAST	Pool	n/a		
	CONDO	Pets Allowed	n/a		
Unit #	3207	Total Area SqFt			
Complex	ONE MIAMI EAST	Maintenance Fee	\$0		
	CONDO	Lot Dimensions	1,178		

Information has not been verified, is not guaranteed

