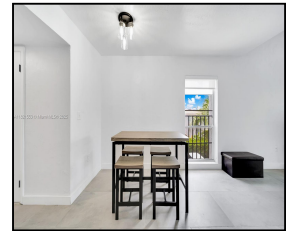
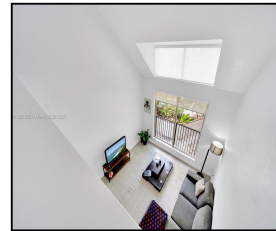


6900 N Kendall Dr #A303

\$305,000



Remarks

Don't miss this rare opportunity to own a spacious 1 bed / 1.5 bath condo with 855 sq ft in the heart of Pinecrest! Located on the 3rd floor, this charming unit features a walk-in closet in the primary suite, secure entry, and night security from 4 PM to 8 AM. Enjoy a vibrant lifestyle just minutes from Dadeland Mall, parks, dining, and public transit. Nestled in a safe, well-maintained community—this is the perfect place to call home or invest in a prime location.

Features & Amenities

County		Bedrooms	1	MLS#	A11821553
Address	6900 N Kendall Dr	Bathrooms	1	Status	A
	#A303	Haft Bathrooms	1	Tax Amount	\$3569
City	Pinecrest FL	Garage Spaces	0	Tax Year	\$2,024
Zip	33156	Water Front	n/a	Year Built	1970
Subdivision	DADELAND GROVE	Pool	n/a		
	CONDO	Pets Allowed	n/a		
Unit #	A303	Total Area SqFt			
Complex	DADELAND GROVE	Maintenance Fee	\$856		
	CONDO	Lot Dimensions	855		

Information has not been verified, is not guaranteed

