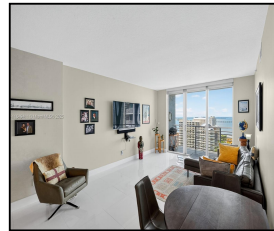


335 S Biscayne Blvd #3501

\$665,000



## Remarks

Stunning turnkey 2BD/2BA condo featuring breathtaking panoramic views of Biscayne Bay, the ocean, and Brickell Key. Enjoy a sleek, modern open-concept layout with a contemporary kitchen and two beautifully updated bathrooms. Situated in the vibrant heart of Miami's Downtown/Brickell district, steps away from premier dining hotspots as well as top entertainment venues including Miami Heat Arena and Bayside. Just minutes away from Miami Beach, and the airport. This unit boasts central A/C, fiber optic high-speed WiFi, cable TV, and in-unit W/D. Includes assigned parking plus valet service. 2 brand-new pools. separate gyms for men and women. saunas. 24-hour security along with a

## Features & Amenities

<b>County</b>		<b>Bedrooms</b>	2	<b>MLS#</b>	A11849411
<b>Address</b>	335 S Biscayne Blvd	<b>Bathrooms</b>	2	<b>Status</b>	A
	#3501	<b>Half Bathrooms</b>	0	<b>Tax Amount</b>	\$7029
<b>City</b>	Miami FL	<b>Garage Spaces</b>	1	<b>Tax Year</b>	\$2,024
<b>Zip</b>	33131	<b>Water Front</b>	n/a	<b>Year Built</b>	2005
<b>Subdivision</b>	ONE MIAMI EAST	<b>Pool</b>	n/a		
	CONDO	<b>Pets Allowed</b>	n/a		
<b>Unit #</b>	3501	<b>Total Area SqFt</b>			
<b>Complex</b>	One Miami	<b>Maintenance Fee</b>	\$1,263		
		<b>Lot Dimensions</b>	1,145		

Information has not been verified, is not guaranteed

