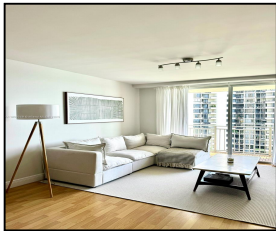


770 Claughton Island Dr #1405

\$431,000



## Remarks

Welcome to Unit 1405 at Isola Condominium on Brickell Key! This beautifully updated 1-bedroom, 1-bathroom condo offers stunning bay and skyline views from the 14th floor. With 708 sq ft of thoughtfully designed living space, this residence features a modern kitchen, updated flooring, spacious bedroom, and a private balcony perfect for relaxing or entertaining. Enjoy resort-style amenities including a waterfront fitness, tennis courts, heated pool, 24-hour concierge, valet, and more. Located just minutes from Brickell City Centre, world-class dining, shopping, and entertainment, this is the ideal urban retreat. Perfect for investors—current tenant leasing at market-rate with lease expiring December 2025.

## Features & Amenities

<b>County</b>		<b>Bedrooms</b>	1	<b>MLS#</b>	A11859349
<b>Address</b>	770 Claughton Island Dr #1405	<b>Bathrooms</b>	1	<b>Status</b>	A
		<b>Half Bathrooms</b>	0	<b>Tax Amount</b>	\$4868
<b>City</b>	Miami FL	<b>Garage Spaces</b>	1	<b>Tax Year</b>	\$2,024
<b>Zip</b>	33131	<b>Water Front</b>	n/a	<b>Year Built</b>	1990
<b>Subdivision</b>	ISOLA CONDO	<b>Pool</b>	n/a		
<b>Unit #</b>	1405	<b>Pets Allowed</b>	n/a		
<b>Complex</b>	Isola Condominium	<b>Total Area SqFt</b>			
		<b>Maintenance Fee</b>	\$1,384		
		<b>Lot Dimensions</b>	708		

Information has not been verified, is not guaranteed

