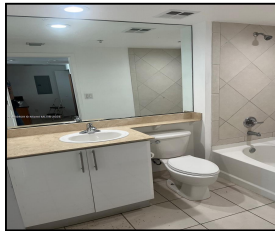


335 S Biscayne Blvd #1506

\$2,200



## Remarks

Amazing studio in the heart of downtown Miami. Enjoy direct views of Biscayne Bay, Bayfront Park, and iconic downtown buildings. Walk to or drive a short distance to Brickell City Centre, Marlins Stadium, Miami Beach, and Wynwood. Residents can enjoy amenities which include a weight room, cardio room, and sauna. Area is ideal for jogging or walking alongside the gorgeous Miami Riverwalk promenade, with direct access to Bayfront Park. A truly special location, situated between the heart of vibrant downtown and the tranquility of the bay. Pool deck currently under reconstruction - as of last update by management. pool scheduled to open December 2025.

## Features & Amenities

<b>County</b>		<b>Bedrooms</b>	0	<b>MLS#</b>	A11888638
<b>Address</b>	335 S Biscayne Blvd #1506	<b>Bathrooms</b>	1	<b>Status</b>	A
<b>City</b>	Miami FL	<b>Half Bathrooms</b>	0	<b>Tax Amount</b>	\$
<b>Zip</b>	33131	<b>Garage Spaces</b>	1	<b>Tax Year</b>	\$0
<b>Subdivision</b>	ONE MIAMI EAST CONDO	<b>Water Front</b>	n/a	<b>Year Built</b>	2005
<b>Unit #</b>	1506	<b>Pool</b>	n/a		
<b>Complex</b>	ONE MIAMI EAST CONDO	<b>Pets Allowed</b>	n/a		
		<b>Total Area SqFt</b>			
		<b>Maintenance Fee</b>	\$0		
		<b>Lot Dimensions</b>	507		

Information has not been verified, is not guaranteed

