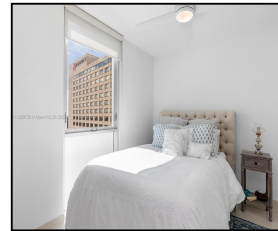


9055 SW 73rd Ct #1603

\$285,000



## Remarks

Stylish 1-bedroom, 1-bath condo located in the sought-after Metropolis at Dadeland. This high-rise unit features an open layout with floor-to-ceiling windows, modern finishes, and a sleek kitchen perfect for entertaining. Enjoy beautiful views of Downtown Dadeland and Pinecrest, along with resort-style amenities including a pool, fitness center, business lounge, and 24-hour concierge. Just steps from Dadeland Mall, Metrorail, and Publix, with easy access to US-1 and the Palmetto. Ideal for professionals, investors, or anyone seeking vibrant urban living in the heart of Miami.

## Features & Amenities

|                    |                 |                        |       |                   |           |
|--------------------|-----------------|------------------------|-------|-------------------|-----------|
| <b>County</b>      |                 | <b>Bedrooms</b>        | 1     | <b>MLS#</b>       | A11890735 |
| <b>Address</b>     | 9055 SW 73rd Ct | <b>Bathrooms</b>       | 1     | <b>Status</b>     | A         |
|                    | #1603           | <b>Haft Bathrooms</b>  | 0     | <b>Tax Amount</b> | \$3869    |
| <b>City</b>        | Miami FL        | <b>Garage Spaces</b>   | 1     | <b>Tax Year</b>   | \$2,024   |
| <b>Zip</b>         | 33156           | <b>Water Front</b>     | n/a   | <b>Year Built</b> | 2006      |
| <b>Subdivision</b> | METROPOLIS I AT | <b>Pool</b>            | n/a   |                   |           |
|                    | DADELAND        | <b>Pets Allowed</b>    | n/a   |                   |           |
| <b>Unit #</b>      | 1603            | <b>Total Area SqFt</b> |       |                   |           |
| <b>Complex</b>     | Metropolis I    | <b>Maintenance Fee</b> | \$769 |                   |           |
|                    |                 | <b>Lot Dimensions</b>  | 657   |                   |           |

Information has not been verified, is not guaranteed

