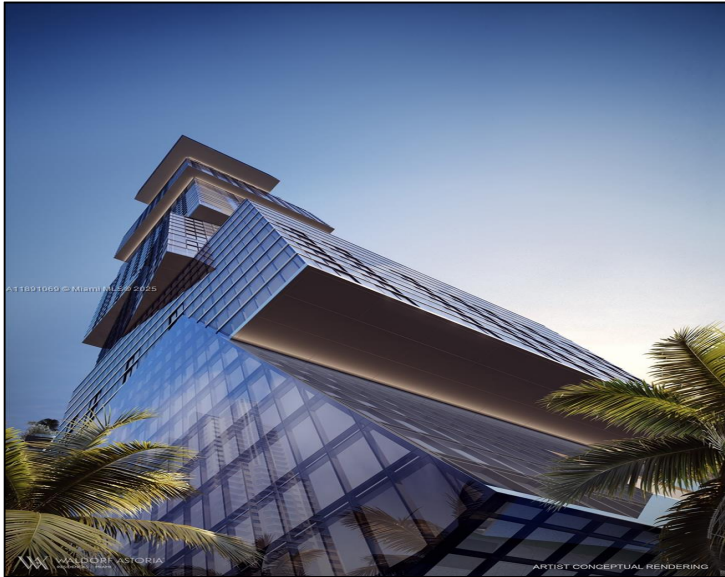


300 N Biscayne Blvd #4408

\$3,296,000



Remarks

This two-bedroom, two-and-a-half-bath home showcases spectacular vistas of the city skyline and glowing sunsets to the west, framed by floor-to-ceiling windows with north and west exposures. The residence features a semi-private elevator entry, elegant finishes, and an open layout designed for both comfort and style. Located within Miami's most iconic new address, Waldorf Astoria offers world-class amenities, five-star services, and the timeless elegance that defines the brand. This is a developer unit, with additional inventory and floor plans available upon request.

Features & Amenities

County		Bedrooms	2	MLS#	A11891069
Address	300 N Biscayne Blvd #4408	Bathrooms	2	Status	A
City	Miami FL	Half Bathrooms	1	Tax Amount	\$
Zip	33132	Garage Spaces	1	Tax Year	\$2,024
Subdivision	Waldorf Astoria Miami	Water Front	n/a	Year Built	2028
Unit #	4408	Pool	n/a		
Complex	Waldorf Astoria Miami Res	Pets Allowed	n/a		
		Total Area SqFt			
		Maintenance Fee	\$3,100		
		Lot Dimensions	1,809		

Information has not been verified, is not guaranteed

