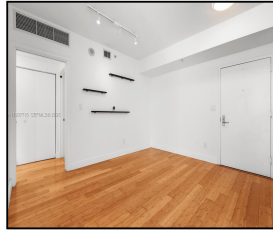


335 S Biscayne Blvd #908

\$605,000



## Remarks

FOR SALE --- 2 Bedroom, 2 bathroom residence at One Miami East offers direct views of Biscayne Bay, the Downtown Miami skyline, and the Port of Miami, making it ideal for both end users and investors. The split-bedroom layout provides privacy, while bamboo hardwood flooring, updated appliances, dimmable lighting, open kitchen and living area keep the focus on the skyline views. The building has two pools, jacuzzi, sundeck, two fitness centers, party rooms, sauna, 24-hour security, valet, and a 24-hour convenience store on site. Centrally located with quick access to major expressways. Downtown. Brickell. and minutes to Miami International Airport. University of Miami. Coconut Grove. and

## Features & Amenities

<b>County</b>		<b>Bedrooms</b>	2	<b>MLS#</b>	A11937715
<b>Address</b>	335 S Biscayne Blvd	<b>Bathrooms</b>	2	<b>Status</b>	A
	#908	<b>Half Bathrooms</b>	0	<b>Tax Amount</b>	\$9632
<b>City</b>	Miami FL	<b>Garage Spaces</b>	1	<b>Tax Year</b>	\$2,025
<b>Zip</b>	33131	<b>Water Front</b>	n/a	<b>Year Built</b>	2005
<b>Subdivision</b>	ONE MIAMI EAST	<b>Pool</b>	n/a		
	CONDO	<b>Pets Allowed</b>	n/a		
<b>Unit #</b>	908	<b>Total Area SqFt</b>			
<b>Complex</b>	One Miami East	<b>Maintenance Fee</b>	\$1,290		
		<b>Lot Dimensions</b>	1,169		

Information has not been verified, is not guaranteed

