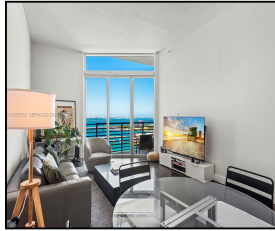


335 S Biscayne Blvd #UPH-10

\$619,000



## Remarks

A stylish PENTHOUSE with dramatic 12-foot ceilings delivering breathtaking views of Biscayne Bay, Miami Beach and Port of Miami. This highly sought-after "10-line" floor plan delivers an open layout, featuring a bright and airy living space. The kitchen offers an abundance of storage space, and a breakfast-bar that continues into the main living space. Enjoy mesmerizing views, day or night, from the North-facing balcony: Never-ending water views by day; dazzling lights of Downtown Miami by night. Enjoy one of Miami's most desired waterfront locations: minutes from Bayfront Park, Brickell City Centre, Pérez Art Museum, Kaseva Center, Adrienne Arsht Center for the Performing Arts and more.

## Features & Amenities

<b>County</b>		<b>Bedrooms</b>	1	<b>MLS#</b>	A11957556
<b>Address</b>	335 S Biscayne Blvd	<b>Bathrooms</b>	1	<b>Status</b>	A
	#UPH-10	<b>Half Bathrooms</b>	0	<b>Tax Amount</b>	\$8033
<b>City</b>	Miami FL	<b>Garage Spaces</b>	1	<b>Tax Year</b>	\$2,025
<b>Zip</b>	33131	<b>Water Front</b>	n/a	<b>Year Built</b>	2005
<b>Subdivision</b>	ONE MIAMI EAST	<b>Pool</b>	n/a		
	CONDO	<b>Pets Allowed</b>	n/a		
<b>Unit #</b>	UPH-10	<b>Total Area SqFt</b>			
<b>Complex</b>	One Miami East	<b>Maintenance Fee</b>	\$927		
		<b>Lot Dimensions</b>	846		

Information has not been verified, is not guaranteed

