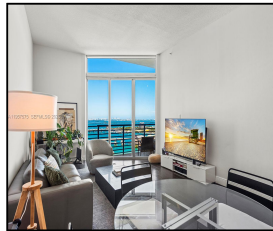
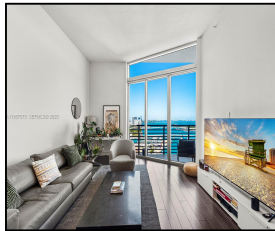


335 S Biscayne Blvd #UPH-10

\$3,500



Remarks

A stylish PENTHOUSE with dramatic 12-foot ceilings delivering breathtaking views of Biscayne Bay, Miami Beach and Port of Miami. This highly sought-after "10-line" floor plan delivers an open layout, featuring a bright and airy living space. The kitchen offers an abundance of storage space, and a breakfast-bar that continues into the main living space. Enjoy mesmerizing views, day or night, from the North-facing balcony: Never-ending water views by day; dazzling lights of Downtown Miami by night. Enjoy one of Miami's most desired waterfront locations: minutes from Bayfront Park, Brickell City Centre. Pérez Art Museum. Kaseva Center. Adrienne Arsht Center for the Performing Arts and more.

Features & Amenities

County		Bedrooms	1	MLS#	A11957575
Address	335 S Biscayne Blvd	Bathrooms	1	Status	A
	#UPH-10	Haft Bathrooms	0	Tax Amount	\$
City	Miami FL	Garage Spaces	1	Tax Year	\$0
Zip	33131	Water Front	n/a	Year Built	2005
Subdivision	ONE MIAMI EAST	Pool	n/a		
	CONDO,One Miami	Pets Allowed	n/a		
	East	Total Area SqFt			
Unit #	UPH-10	Maintenance Fee	\$0		
Complex	ONE MIAMI EAST	Lot Dimensions	846		
	CONDO				

Information has not been verified, is not guaranteed

