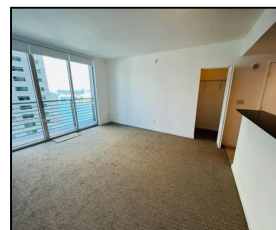
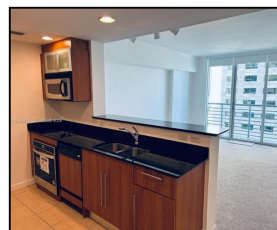
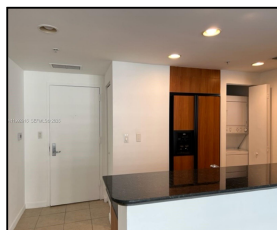
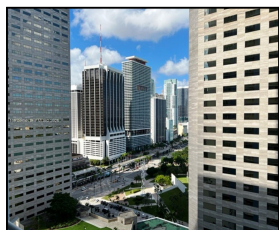
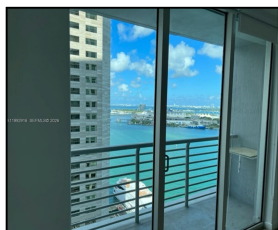


335 S Biscayne Blvd #2406

\$2,350



Remarks

Spacious studio located in One Miami East Tower offering beautiful views of the Bay, Port of Miami, and Downtown. This studio features a kitchen with granite countertops, a walk-in closet, blackout shades, and carpet flooring. Rent includes 1 covered assigned parking space, basic cable. Amenities include a fitness center with separate rooms for cardio and strength training, sauna, party room, attended lobby, secured gate entry, and an on-site waterfront Italian restaurant. Located within walking distance to Brickell, Brickell City Centre, Whole Foods Market, Bayfront Park, Bayside Marketolace. Pérez Art Museum. Frost Science Museum. Maurice A. Ferré Park. Miami Worldcenter. and a

Features & Amenities

County		Bedrooms	0	MLS#	A11992916
Address	335 S Biscayne Blvd #2406	Bathrooms	1	Status	A
City	Miami FL	Haft Bathrooms	0	Tax Amount	\$
Zip	33131	Garage Spaces	1	Tax Year	\$0
Subdivision	ONE MIAMI EAST CONDO	Water Front	n/a	Year Built	2005
Unit #	2406	Pool	n/a		
Complex	ONE MIAMI EAST CONDO	Pets Allowed	n/a		
		Total Area SqFt			
		Maintenance Fee	\$0		
		Lot Dimensions	507		

Information has not been verified, is not guaranteed

