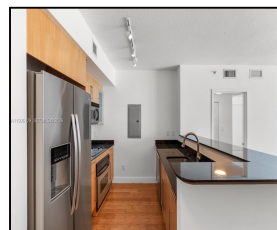
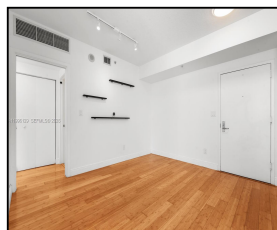
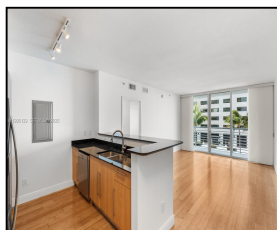


335 S Biscayne Blvd #908

\$3,700



## Remarks

FOR RENT -- 2 Bedroom, 2 bath split floor plan layout unit overlooking Biscayne Bay, Downtown Miami skyline & the Port of Miami. Living at One Miami East offers great amenities; including a NEWLY UPDATED POOL, jacuzzi, sundeck, 2 fitness, centers, party rooms, sauna, 24 hour security, valet and a 24 hour convenience store. This building has a lot to offer and centrally located to the expressway, Airport, University of Miami, Coconut Grove, South Beach and only a short walk to downtown Brickell. Unit recently updated lighting, dimmers, paint, appliances and air fryer.

## Features & Amenities

<b>County</b>		<b>Bedrooms</b>	2	<b>MLS#</b>	A11996129
<b>Address</b>	335 S Biscayne Blvd #908	<b>Bathrooms</b>	2	<b>Status</b>	A
<b>City</b>	Miami FL	<b>Haft Bathrooms</b>	0	<b>Tax Amount</b>	\$
<b>Zip</b>	33131	<b>Garage Spaces</b>	1	<b>Tax Year</b>	\$0
<b>Subdivision</b>	ONE MIAMI EAST CONDO	<b>Water Front</b>	n/a	<b>Year Built</b>	2005
<b>Unit #</b>	908	<b>Pool</b>	n/a		
<b>Complex</b>	ONE MIAMI EAST CONDO	<b>Pets Allowed</b>	n/a		
		<b>Total Area SqFt</b>			
		<b>Maintenance Fee</b>	\$0		
		<b>Lot Dimensions</b>	1,169		

Information has not been verified, is not guaranteed

