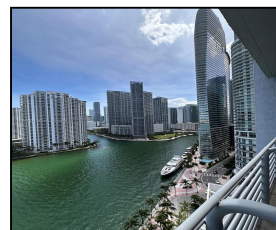
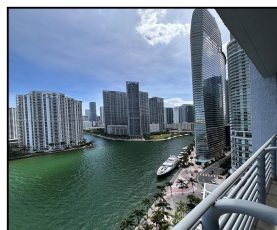
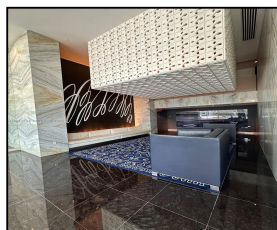
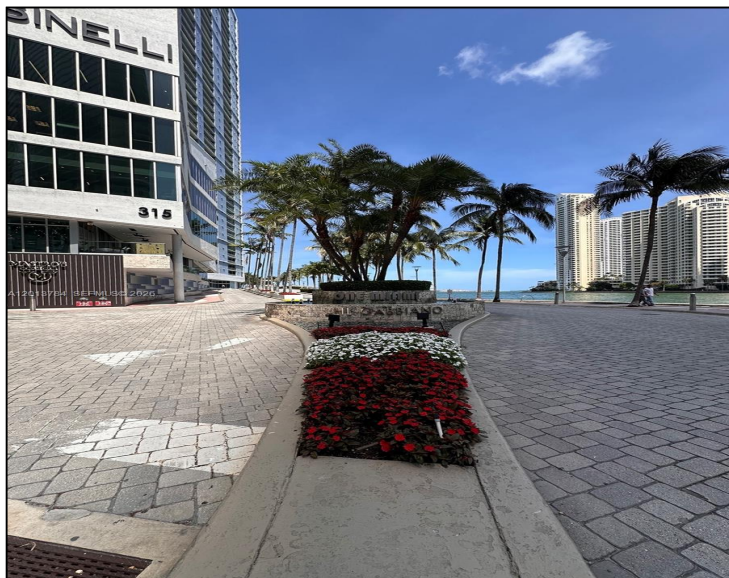


325 S Biscayne Blvd #2215

\$3,650



## Remarks

Beautiful resort style escape in the Magic City. Enjoy these 2 beds 2 bath split floor plan condo with direct views of Biscayne Bay, Miami River, and Brickell. Condo includes Italian kitchen cabinets with stainless steel appliances and granite countertop, modern baths. Located in the heart of Miami within short distance to Brickell Village, Arenas, Bayside, Museums and Performance Center, and only a short drive to South Beach, Key Biscayne, Grove, Gables, Wynwood, Design District, and Airport. Washer/dryer inside the apartment. Amenities include 2 pools, jacuzzi, sauna sundeck area. 2 fitness centers. partv room. valet. concierae. Conf. Room. Convenience Store. and 24-hr Security.

## Features & Amenities

<b>County</b>		<b>Bedrooms</b>	2	<b>MLS#</b>	A12013784
<b>Address</b>	325 S Biscayne Blvd #2215	<b>Bathrooms</b>	2	<b>Status</b>	A
<b>City</b>	Miami FL	<b>Haft Bathrooms</b>	0	<b>Tax Amount</b>	\$
<b>Zip</b>	33131	<b>Garage Spaces</b>	1	<b>Tax Year</b>	\$0
<b>Subdivision</b>	ONE MIAMI WEST CONDO	<b>Water Front</b>	n/a	<b>Year Built</b>	2005
<b>Unit #</b>	2215	<b>Pool</b>	n/a		
<b>Complex</b>	ONE MIAMI WEST CONDO	<b>Pets Allowed</b>	n/a		
		<b>Total Area SqFt</b>			
		<b>Maintenance Fee</b>	\$0		
		<b>Lot Dimensions</b>	1,145		

Information has not been verified, is not guaranteed

