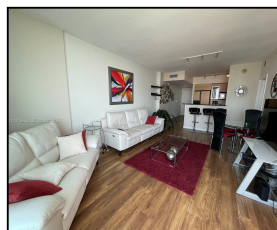
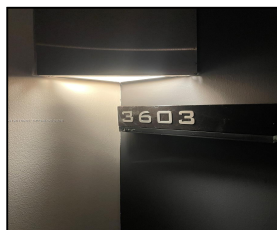
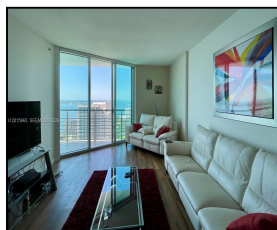


335 S Biscayne Blvd #3603

\$3,500



Remarks

Rarely available "06" line at the prestigious One Miami East tower. This spacious 36th-floor residence offers breathtaking, unobstructed views of Biscayne Bay, the Miami River, and Brickell Key. Located in the vibrant heart of Downtown Miami, you are steps away from the Riverwalk, Brickell's world-class dining, Whole Foods, the Kaseya Center, and lush waterfront parks. One Miami features premium amenities, including a 24-hour concierge, valet parking, a business center, and an on-site convenience store. This unit includes one assigned parking space conveniently located on the 3rd floor. Experience the ultimate urban lifestyle where city energy meets serene bay front living. Contact

Features & Amenities

County		Bedrooms	1	MLS#	A12015963
Address	335 S Biscayne Blvd #3603	Bathrooms	1	Status	A
City	Miami FL	Half Bathrooms	0	Tax Amount	\$
Zip	33131	Garage Spaces	1	Tax Year	\$0
Subdivision	ONE MIAMI EAST CONDO	Water Front	n/a	Year Built	2005
Unit #	3603	Pool	n/a		
Complex	ONE MIAMI EAST CONDO	Pets Allowed	n/a		
		Total Area SqFt			
		Maintenance Fee	\$0		
		Lot Dimensions	868		

Information has not been verified, is not guaranteed

