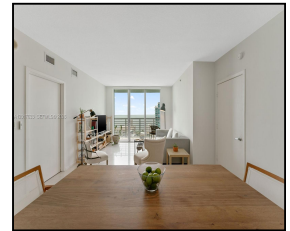
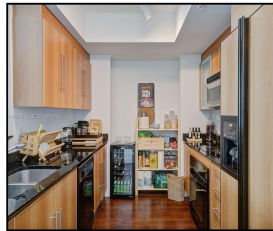


335 S Biscayne Blvd #4205

\$3,900



Remarks

Spectacular 2 beds / 2-bathrooms apartment with amazing views of Claughton Island, Miami River and Brickell Skyline. This unit offers floor to ceiling impact windows and doors leading to a balcony where you can enjoy beautiful sunsets. Washer and dryer included. Within walking distance to restaurants, Brickell city center, Publix. Some of the building amenities includes 2 pools, sun tanning deck, steam room, 2 gyms, valet parking, 24hr security and concierge and a convenience store.

Features & Amenities

County		Bedrooms	2	MLS#	A12017633
Address	335 S Biscayne Blvd #4205	Bathrooms	2	Status	A
City	Miami FL	Half Bathrooms	0	Tax Amount	\$
Zip	33131	Garage Spaces	1	Tax Year	\$0
Subdivision	ONE MIAMI EAST CONDO	Water Front	n/a	Year Built	2005
Unit #	4205	Pool	n/a		
Complex	ONE MIAMI EAST CONDO	Pets Allowed	n/a		
		Total Area SqFt			
		Maintenance Fee	\$0		
		Lot Dimensions	1,227		

Information has not been verified, is not guaranteed

